

Contact our HS2 Helpdesk team on **08081 434 434**

# HS2 Update

Twyford to Greatworth | June 2021

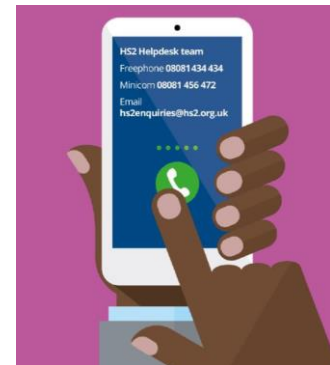
High Speed Two (HS2) is the new high speed railway for Britain. In response to COVID-19, we have worked hard to ensure that our working practices are fully aligned with the Site Operating Procedures produced by the Construction Leadership Council. These procedures have been endorsed by Public Health England. We will be keeping our local websites [www.hs2inbucksandox.co.uk](http://www.hs2inbucksandox.co.uk) and [www.hs2innorthants.co.uk](http://www.hs2innorthants.co.uk) up to date with information on our works in the local area.

## Update on our works

Our works are underway in the Twyford to Greatworth area and construction activities are continuing.

Over the next few months, you can expect to see the following works in the local area:

- Ground Investigation (GI) works and water monitoring;
- Utility works including trial holes and diversions;
- Continued set up of works compounds at A43, A422, A421 and A4421;
- Piling work at the A421 and A4421;
- Localised clearance of vegetation and fencing along the line of the route from Twyford up to Greatworth;
- Continuation of the access roads and drainage activities;
- Excavation, movement and storage of earthworks;
- The creation of several site access points from existing roads;
- Demolition of some structures along the line of the railway; and
- Demolition of the existing Finmere Bridge at the A4421 and installation of temporary bridges at the A4421 and A421.



## Monthly Virtual Engagement Sessions

We are running monthly, virtual 1-2-1 sessions. These 20-minute appointments are open to anyone in the community to talk to us about a topic of their choice. This could range from construction to employment opportunities or funding.

You can view our upcoming events here:

[www.hs2.org.uk/events](http://www.hs2.org.uk/events)



## Progress so far in 2021

### Update on our haul roads and construction access roads

Work is continuing on the construction of our internal haul and access roads along the route. We have started work north of West Street near Twyford and constructed some culvert crossings, to ensure watercourses continue to flow under our roads. Throughout 2021 we will be progressing the access road across the Twyford to Greatworth section in multiple locations and forming stockpiles and drainage ponds to support earthworks activities. Local traffic management will be used as required for these works.

**These internal roads will help reduce impact on nearby communities by keeping lorries off the local road network as much as possible.**

We are continuing with trial pits to assess local ground conditions. We will, where necessary, create strengthened sections of roads where access roads cross, and set up crossing points to ensure the safety of road users.

These strengthened crossing points will be required at:

- West Street, near Twyford
- Preston Bissett Road, Main Street and Stratton Audley Road, Chetwode
- Featherbed Lane, Mixbury
- A422 Brackley Road
- Radstone Road

Some local public rights of way or private access roads will also require crossing points. In some cases, specific rights of way will be closed, or diverted where possible, to maintain access across our works. There will be specific public right of way notices published ahead of any closures or diversions. These will be available on our local website [Commonplace](#).

**If you have a question about HS2 or our works, please contact our HS2 Helpdesk team on 08081 434 434 or email [hs2enquiries@hs2.org.uk](mailto:hs2enquiries@hs2.org.uk).**



Images showing the development of our internal access road in our Twyford to Greatworth section

## Utilities and ground investigation works

We are continuing to carry out utilities and ground investigation works including trial holes and drainage surveys around the local area. These trials confirm the presence of services and inform the construction of the railway line.

Works will continue in fields along the line of the route and some will be on or adjacent to roads. For trials on the road network, short term traffic management or road closures will need to be in place.

Later in the year, we will also be starting work at the following sites, carrying out utility diversions for our main construction work and localised works for our compounds:

- A421
- Featherbed Lane
- A43
- A4421
- A422

We will be publishing any traffic diversions or road closures associated with this work later in the year on Commonplace.

## Noise and air quality monitoring

We will be setting up a series of noise and air quality monitoring points across the section from Twyford to Greatworth this year, prior to main construction starting. These monitors will ensure that we work within the agreed levels out in the Environmental Statement.

## Ultrasite

EKFB has now registered with the Considerate Constructors "Ultrasite" Scheme. An independent assessor will be scoring our main works sites against the principles of the scheme which include: site appearance, respecting communities, protecting the environment, securing everyone's safety and valuing our workforce. EKFB's aim is to exceed on all areas of the Code and actively seek to improve not only our own performance but that of our supply chain.



An example of a Utility Trial Hole



## Compounds update

Works are continuing at our various main works compounds. We have four main compound sites in the Twyford to Greatworth section. They are located at:

- A4421
- A422
- A421
- A43

At the A4421, work is finishing at the earthworks embankment and foundation trial site. Work is expected to be completed by the end of the summer, with the data collected being used to inform the construction of the railway embankments.

At our A4421 compound, we have installed our temporary office cabins and we are preparing for piling equipment to be delivered for the installation of our temporary bridge, which will cross the A4421. The piling work will be starting in June, with the installation of the new bridge expected over the summer. We will also be completing a break from highway to the south of the A4421 to allow safe access to our sites. Local traffic management will be required for these works.

At the A422, we have completed a break from highway giving access to the north site. We are now carrying out the break from highway on the south corridor and the creation of the crossing point which will allow vehicles to move between or compounds.

Over the summer, we will be starting work on our temporary diversion of the A422 to the south and the earthworks for the railway cutting north and south of the A422. This diversion, including a new roundabout, will allow access to our compounds while still allowing traffic to continue to flow between Buckingham and Brackley during our construction works.

At the A421, our temporary compound is developing, with an access now in place off the A421. Over the summer, this compound will manage piling works, which will inform the design and construction of the railway in this location.

Later in the year, we will be starting our access road and installing a new temporary bridge over the A421, which will allow construction traffic to pass over the top of the road.



Image showing the development of the trial embankment



Image showing the development of the A422 compound site

## Early works update

### Bat Mitigation

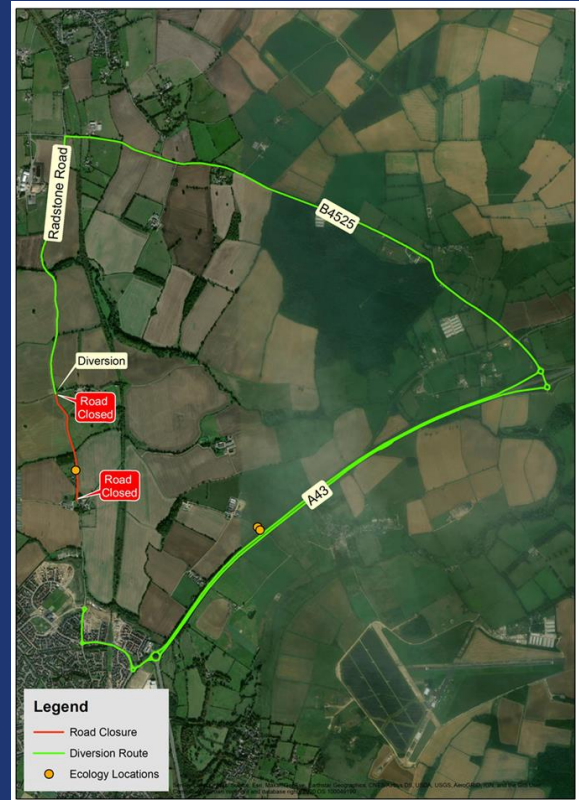
We will be undertaking bat surveys on Radstone Road on 7th June. This work will involve ecologists observing and climbing trees on the roadside to check for bat habitats. There will be a short term closure between 9.30 and 3.30 to allow the ecologists to carry out this work safely.

The map to the right shows the closure point and diversion. More information can be found in the Advance Works Notice on Commonplace.

### Archaeological works near Halse Copse

Archeological investigations are continuing near Halse Copse. We are carrying out surveys, followed by test pits. If the test pits indicate that additional mitigation is required, we will then carry out further work at the end of June.

There will be two small temporary compounds to help us carry out this work, and temporary fencing around the site.



Map showing the Radstone Road closure and diversion route

# Keep up to date with our works

## HS2 In Your Area Website

Our Commonplace website provides the most up to date information about our works in this area.

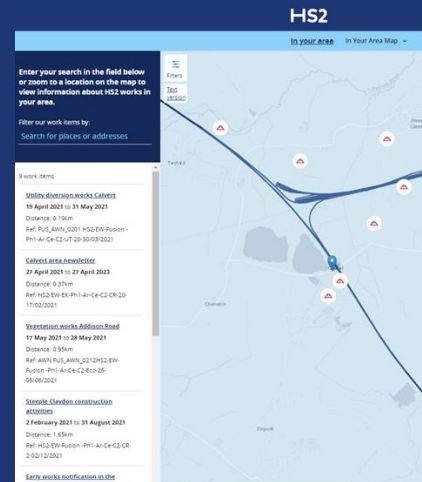
We would recommend subscribing to our news updates. You can do this in two easy steps:

Visit our local Commonplace websites – [www.hs2inbuckandox.co.uk](http://www.hs2inbuckandox.co.uk) and [www.hs2innorthants.co.uk](http://www.hs2innorthants.co.uk)

1. Under 'Subscribe to news updates', enter your email address and click 'Get Project News'

The website also features our new **in your area maps**, these are new interactive maps that feature our advanced work notifications and route information.

Simply type in your address in the search bar and you will find out what is happening in your area.



**In your area maps:**

[www.hs2.org.uk/in-your-area/map/](http://www.hs2.org.uk/in-your-area/map/)

## FAQ

Some of our most commonly asked questions in the Twyford to Greatworth area...

### **Q: How are you protecting birds during nesting season?**

A: Before any work close to trees or vegetation is undertaken, an ecologist attends the site and carries out a detailed survey to ensure no bats, birds or nests are present. If any wildlife or nests are discovered, the tree is left alone until the bird leaves the nest, and a boundary is put in place to ensure they are not disturbed.

### **Q: Are you tracking your HGVs to ensure they follow approved routes?**

A: We have a vehicle management system in place to ensure we can track all regular vehicles and hauliers delivering to our sites. We can monitor the routes taken, reroute vehicles where necessary, and reject any vehicles who do not comply with our strict criteria.

### **Q: How are you managing dust at your work sites?**

A: We are using dust suppression systems at our sites. We spray down work areas, haul routes and plant using water bowsers to prevent dust from becoming airborne. We also use dust monitoring techniques to ensure we can monitor air quality levels close to our work sites.

## Community investment

To date we have trained over 500 construction candidates in partnership with various training providers, including the Bucks College Group. For information on careers and local job vacancies, visit [www.EKFB.com/careers](http://www.EKFB.com/careers).

We are also planning a range of exciting STEM activities which we will launch in the next academic year when restrictions are eased.

At the beginning of 2021 we launched our TimeBank initiative, where staff are encouraged to do one day of volunteering per year. If you have a suggestion for volunteering or community investment, whether it be a spot of gardening or a careers talk, then please get in touch.

We are keen to support with volunteering and fundraising work for local charities. If you would like to know more then please contact the HS2 Helpdesk.



Images of our Brackley office

## HS2 funds for the community

We have two funds which are available to local communities to help with disruption that will be caused by the construction of Phase One of HS2 – **The Community and Environmental Fund (CLEF)** and the **Business and Local Economy Fund (BLEF)**.

Community and business groups along the HS2 route have been awarded over £5million for projects since the funds began running since March 2017.

Recently, the village of Twyford received HS2 funding to refurbish the local play area, lay new flooring and update the equipment in the outdoor gym. The project will also install new equipment suitable for older children and young adults.

For more information on the funds available visit [www.hs2funds.org.uk](http://www.hs2funds.org.uk)



# Keeping you informed

We are committed to keeping you informed about work on HS2. This includes ensuring you know what to expect and when to expect it, as well as how we can help.

## Residents' Charter and Commissioner

The Residents' Charter is our promise to communicate as clearly as we possibly can with people who live along or near the HS2 route.

[www.gov.uk/government/publications/hs2-residents-charter](http://www.gov.uk/government/publications/hs2-residents-charter)

We also have an independent Residents'

Commissioner whose job is to make sure we keep to the promises we make in the Charter and to keep it under constant review. Find reports at:

[www.gov.uk/government/collections/hs2-ltd-residents-commissioner](http://www.gov.uk/government/collections/hs2-ltd-residents-commissioner)

You can contact the Commissioner at:  
[residentscommissioner@hs2.org.uk](mailto:residentscommissioner@hs2.org.uk)

## Construction Commissioner

The Construction Commissioner's role is to mediate and monitor the way in which HS2 Ltd manages and responds to construction complaints. You can contact the Construction Commissioner by emailing:

[complaints@hs2-cc.org.uk](mailto:complaints@hs2-cc.org.uk)

## Property and compensation

You can find out all about HS2 and properties along the line of route by visiting:

[www.gov.uk/government/collections/hs2-property](http://www.gov.uk/government/collections/hs2-property)

Find out if you're eligible for compensation at:

[www.gov.uk/claim-compensation-if-affected-by-hs2](http://www.gov.uk/claim-compensation-if-affected-by-hs2)

## Holding us to account

If you are unhappy for any reason you can make a complaint by contacting our HS2 Helpdesk team. For more details on our complaints process, please visit our website:

[www.hs2.org.uk/how-to-complain](http://www.hs2.org.uk/how-to-complain)

## Contact Us

Contact our HS2 Helpdesk team all day, every day of the year on:

 Freephone **08081 434 434**

 Minicom **08081 456 472**

 Email **[HS2enquiries@hs2.org.uk](mailto:HS2enquiries@hs2.org.uk)**

Write to:

**FREEPOST**

**HS2 Community Engagement**

Website **[www.hs2.org.uk](http://www.hs2.org.uk)**

To keep up to date with what is happening in your local area, visit:

**[www.HS2inyourarea.co.uk](http://www.HS2inyourarea.co.uk)**

Please contact us if you'd like a free copy of this document in large print, Braille, audio or easy read. You can also contact us for help and information in a different language.

HS2 Ltd is committed to protecting personal information. If you wish to know more about how we use your personal information please see our Privacy Notice

<https://www.gov.uk/government/publications/high-speed-two-ltd-privacy-notice>

Reference number: **HS2-EW-EK-Ph1-Ar-Ce-C2-CR-23-20/05/2021**

**1MC12-EKF-SE-NTE-CS09-000004**

High Speed Two (HS2) Limited, registered in England and Wales.

Registered office: Two Snowhill, Snow Hill Queensway, Birmingham B4 6GA.

Company registration number: 06791686. VAT registration number: 888 8512 56